

High Density 1U Fiber Connect Panel System

High-Density FCP3 Fiber Connect Panel

Economically connect, protect and manage up to 96 fibers within 1 rack mount unit. Designed to integrate with high density FCP3 fiber Plug and Play modules.



High Density

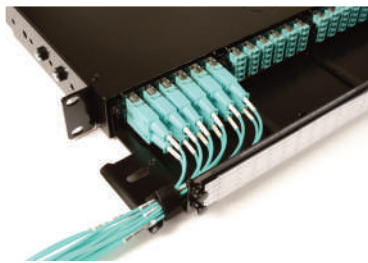
Supports up to 96 fibers in just 1U

Enhanced Accessibility

Fiber drawer slides to the front and rear for maximum access to fiber connections

Bend Radius Management

Recessed modules provide a high-capacity jumper management zone that helps maintain proper fiber bend radius



Part

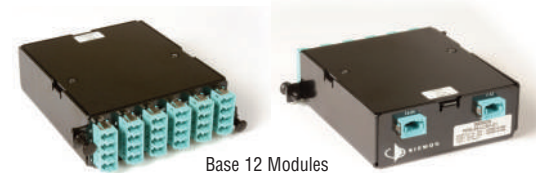
Description

FCP3-DWR-4A High-density FCP3 fiber enclosure, black, 1U

Note: Maximum fusion splice capacity is 72 fibers.

High Density FCP3 Connect Panel Plug and Play Modules and Adapter Plates

Siemon LC to MTP® FCP3 Plug and Play modules and LC adapter plates are designed for simple, snap-in deployment within the high density FCP3 Fiber Connect Panel. Providing up to 24 LC fibers per module, the factory terminated and tested modules are available in OM3 and OM4 multimode and singlemode configurations. The LC adapter plates provide a simple way to integrate traditional LC to LC connectivity within the high density FCP3 enclosure.



Base 12 Modules



Base 8 Modules



Adapter Plates

High Density

Modules provide up to 24 LC fibers per module, supporting up to 96 ports within the 1U FCP3 Fiber Connect Panel

100% Fiber Utilisation and Future Application Support

Base 8 modules feature three 8-fiber MTPs for use with 8-fiber assemblies used in 40 and 100 Gig applications and beyond, eliminating the need for conversion cords

Fast Deployment

Snap-in mounting and multi-fiber MTP connectivity offers ultra-fast deployment of high-performance fiber channels

Easy Identification

Modules are colour coded black for Base 12 and grey for Base 8 to easily distinguish between the two systems

Compact Housing

Reduces mounting depth for greater cable management space within enclosures

Optimised Adapter Spacing

Enables easy finger access to fiber jumper connector latches in high density patching environments

Multimode and Singlemode Modules

Utilises zirconia ceramic sleeves for optimum performance

High Density 1U Fiber Connect Panel System

Ordering Information:

Base 12 Modules



PPM-(XX)-L(X)(XX)-01(X) Base 12 HD FCP3 LC to MTP modules, black module

Fiber Count
12 = 12 Fibers
24 = 24 Fibers

Shutter Door Option*

C = Standard LC
S = Shuttered LC

Fiber Type

5L = OM3, XGLO 300 50/125 Multimode Aqua adapters
5V = OM4, XGLO 550 50/125 Multimode Aqua adapters
EV = OM4, XGLO 550 50/125 Multimode, Erika Violet adapters
SM = OS1/OS2, Singlemode Blue adapters

Performance

Blank = Standard Loss
L = Low Loss (OM3/OM4 only)

Base 8 Modules



PEM(X)24-L(X)(X)(X)(XX)A . . . 24 Fiber base 8 HD FCP3 LC to MTP modules, grey module

Gender
F = Female
M = Male

Shutter Door Option*

C = Standard LC
S = Shuttered LC

Performance

S = Standard Loss
L = Low Loss (OM3/OM4 only)

Polarity

AC = Method A or C
B1 = Method B (Side 1)
B2 = Method B (Side 2)

Fiber Type

L = OM3 XGLO 300 50/125 Multimode, Aqua adapters
V = OM4 XGLO 550 50/125 Multimode, Aqua adapters
E = OM4, XGLO 550 50/125 Multimode, Erika Violet adapters
A = OS1/OS2 Singlemode, Blue adapters



* Optional Shuttered LC adapters feature a small plastic shutter door that opens upon insertion without touching the connector endface and springs back into the closed position upon removal to ensure protection of empty ports.

Adapter Plates



PPM-F-L(X)(X)(XX)-01 High-density FCP3 LC adapter plates, black

Shutter Door Option*

C = Standard LC
S = Shuttered LC

Adapter Colour

Blank = Beige
Q = Aqua
E = Erika Violet
U = BLue

Fiber Count
12 = 12 Fibers
24 = 24 Fibers



PPM-F-MP(XX)-01-(X) High-density FCP3 MTP adapter plates, black

Fiber Count
48 = 4 Port
72 = 6 Port

Adapter Colour/Key Orientation

Q = Aqua - Opposed
E = Erika Violet - Opposed
B = Grey - Aligned
Blank = Black - Opposed

PERFORMANCE SPECIFICATIONS (STANDARD)

Fiber Type		MAX Insertion (dB)		Min. Return Loss (dB)		Performance Class
		MTP	LC	MTP	LC	
5L-MM	50/125 10G (OM3)	0.40	0.25	20	30	XGLO® 300
5V-MM	50/125 10G (OM4)	0.40	0.25	20	30	XGLO 550
SM-LWP	SM (OS1/OS2)	0.60	0.40	60	55	XGLO

PERFORMANCE SPECIFICATIONS (LOW LOSS)

Fiber Type		MAX Insertion (dB)		Min. Return Loss (dB)		Performance Class
		MTP	LC	MTP	LC	
5L-MM	50/125 10G (OM3)	0.20	0.15	20	30	XGLO 300
5V-MM	50/125 10G (OM4)	0.20	0.15	20	30	XGLO 550

Part # Description
PPM-BLNK Blank adapter plate, black