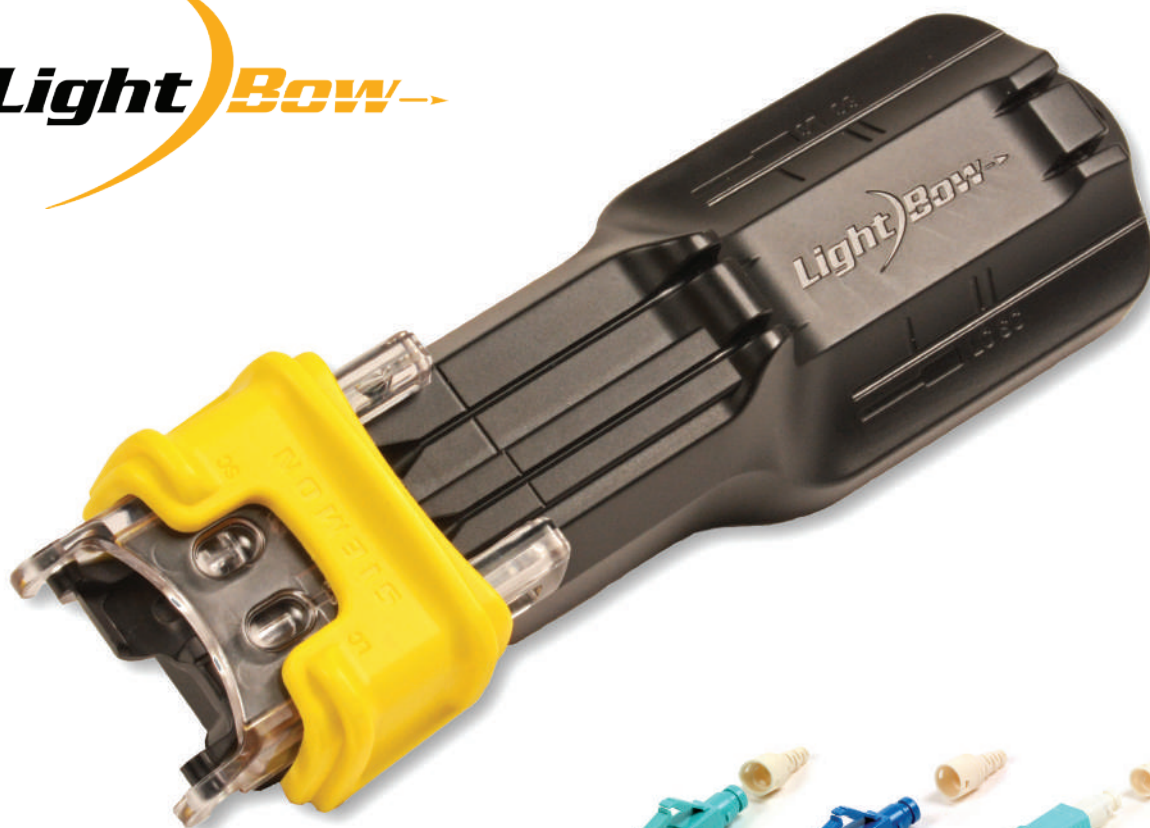


LightBow™ Fiber Termination System

Fast deployment and superior reliability are of the utmost importance in today's fiber networks. While fiber field terminations offer the flexibility to meet a variety of installation scenarios, they need to be quick and easy while ensuring consistently high performance connections. With its patented termination tool and pre-polished mechanical splice connectors, the LightBow Fiber Optic Termination System significantly reduces termination time, prevents fiber end face contamination and air gaps, and enables easy verification of termination quality. The LightBow Fiber Termination Kit includes the termination tool, cleaver, Visual Fault Locator and everything else to quickly and securely terminate the Siemon LightBow system components.



LightBow Termination Tool

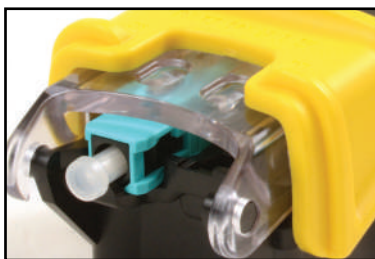


LightBow Polished Connectors



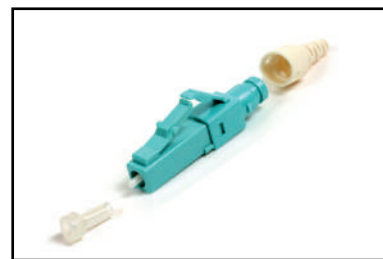
Maximum Reliability

Bow feature maintains proper pressure of fiber ends to eliminate air gaps during termination



Reduced Risk of Contamination

All termination steps completed with dust cap in place.



Factory Assembled

LightBow connectors ship factory-assembled, eliminating time-consuming field assembly of connector bodies.

LightBow Termination Tool

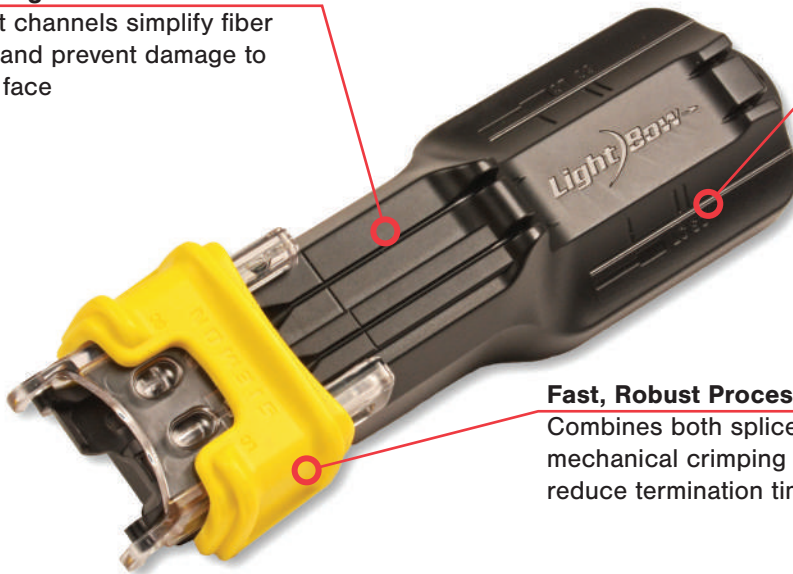
Siemon's LightBow mechanical splice termination kit includes a patented, easy-to-use termination tool that dramatically reduces termination time while ensuring reliability. With universal LC/SC compatibility, the LightBow tool simplifies fiber insertion and avoids end face damage when terminating LightBow pre-polished mechanical splice connectors.

Optimal Alignment

Alignment channels simplify fiber insertion and prevent damage to fiber end face

Integrated Strip Template

LC and SC strip template on tool ensures proper strip lengths



Fast, Robust Process

Combines both splice activation and mechanical crimping to significantly reduce termination time

LightBow Termination Tool

Precision Cleaver

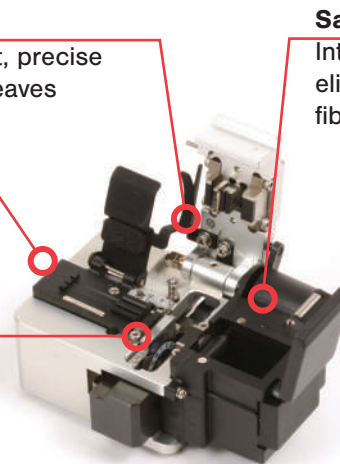
Provides consistent, precise and high quality cleaves

Oil Dampening System

Allows the blade to cleave at a uniform speed eliminating user variance

Long Lasting Blade

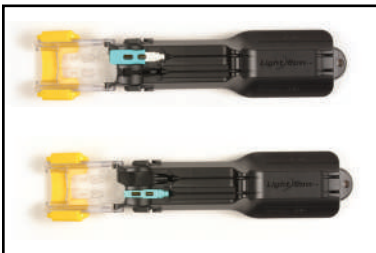
Allows for 48,000 cleaves



Safety

Integrated collection bin eliminates handling of cleaved fiber termination time

LightBow Termination Cleaver



Universal LC/SC Compatibility

Termination tool terminates both LC and SC connectors with no time-consuming changeover



Ergonomic

Termination tool can be used in handheld or table-top position with non-slip rubber feet



Lightbow Fiber Termination Kit

The kit includes all tools required to perform terminations.

LightBow Fiber Termination Kit

KIT INCLUDES:

- Termination tool (patented)
- Precision cleaver
- Visual fault locator (VFL)
- Visual fault locator 1.25mm adapter
- Jacket stripper
- Buffer stripper
- Scissors
- Tweezers
- Strip template
- Marker
- Alcohol pads
- Electrical tape
- Convenient carrying case



LightBow Pre-Polished Connectors

Combined with Siemon’s exclusive patented LightBow termination tool, Siemon LightBow prepolished mechanical splice connectors can be deployed with unsurpassed termination speed and quality via a built-in VFL verification window and the ability to adjust or reterminate. Available in both LC and SC configurations, these connectors support both multimode and singlemode versions of Siemon’s XGLO® and LightSystem® solutions.



Optimal Performance

		Singlemode		Multimode
		APC	UPC	PC
Insertion Loss	Typical	0.30dB	0.20dB	0.20dB
	Max.	0.75dB	0.50dB	0.30dB
Return Loss	Typical	-60dB (1310nm) -65dB (1550nm)	-55dB	-37dB
	Min.	-50dB	-45dB	-25dB



VFL Verification Window
Built-in window in the connector body is used with the 0.5mW output power, Laser Class 1 VFL to verify a good termination. Connector can be adjusted or reterminated if needed.

Ordering Information

LightBow Fiber Termination Kit and Replacement Parts

LightBow Fiber Termination Kit

Part Number	Description
FT-LB-KIT	LightBow fiber termination kit

LightBow Replacement Parts

Part Number	Description
FT-LB-TOOL	LightBow termination tool (patent pending)
FT-LB-CLV	LightBow cleaver
FT-LB-TMP	LightBow SC and LC strip template
FT-VFL-P-A	Visual fault locator pen
FT-VFL-ADPT-A	Visual fault locator 1.25mm adapter



LightBow Pre-Polished Connectors

LC Multimode

Part Number	Description
FC1-LB-LC6-9BG	LC simplex connector, beige, 62.5/125µm multimode (OM1), 900µm buffered fiber, white boot
FC1-LB-LC5-9AQ	LC simplex connector, aqua, 50/125µm multimode (OM3/OM4), 900µm buffered fiber, white boot

LC Singlemode

Part Number	Description
FC1-LB-LCU-9BL	LC simplex connector (UPC), blue, singlemode (OS1/OS2), 900µm buffered fiber, white boot
FC1-LB-LCA-9GR	LC simplex connector (APC), green, singlemode (OS1/OS2), 900µm buffered fiber, white boot

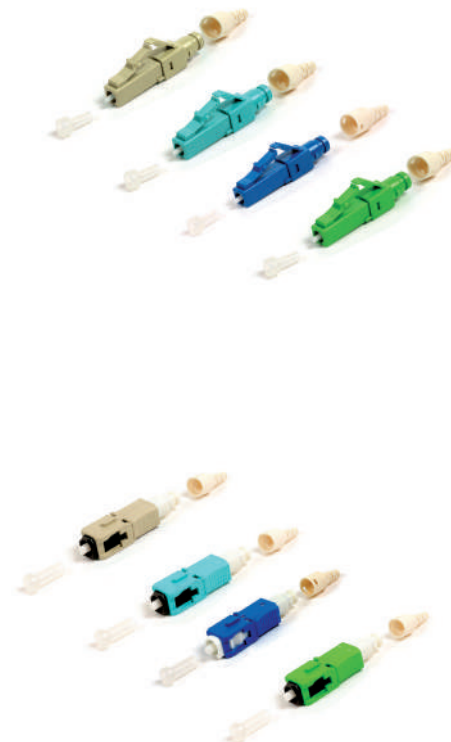
SC Multimode

Part Number	Description
FC1-LB-SC6-9BG	SC simplex connector, beige, 62.5/125µm multimode (OM1), 900µm buffered fiber, white boot
FC1-LB-SC5-9AQ	SC simplex connector, aqua, 50/125µm multimode (OM3/OM4), 900µm buffered fiber, white boot

SC Singlemode

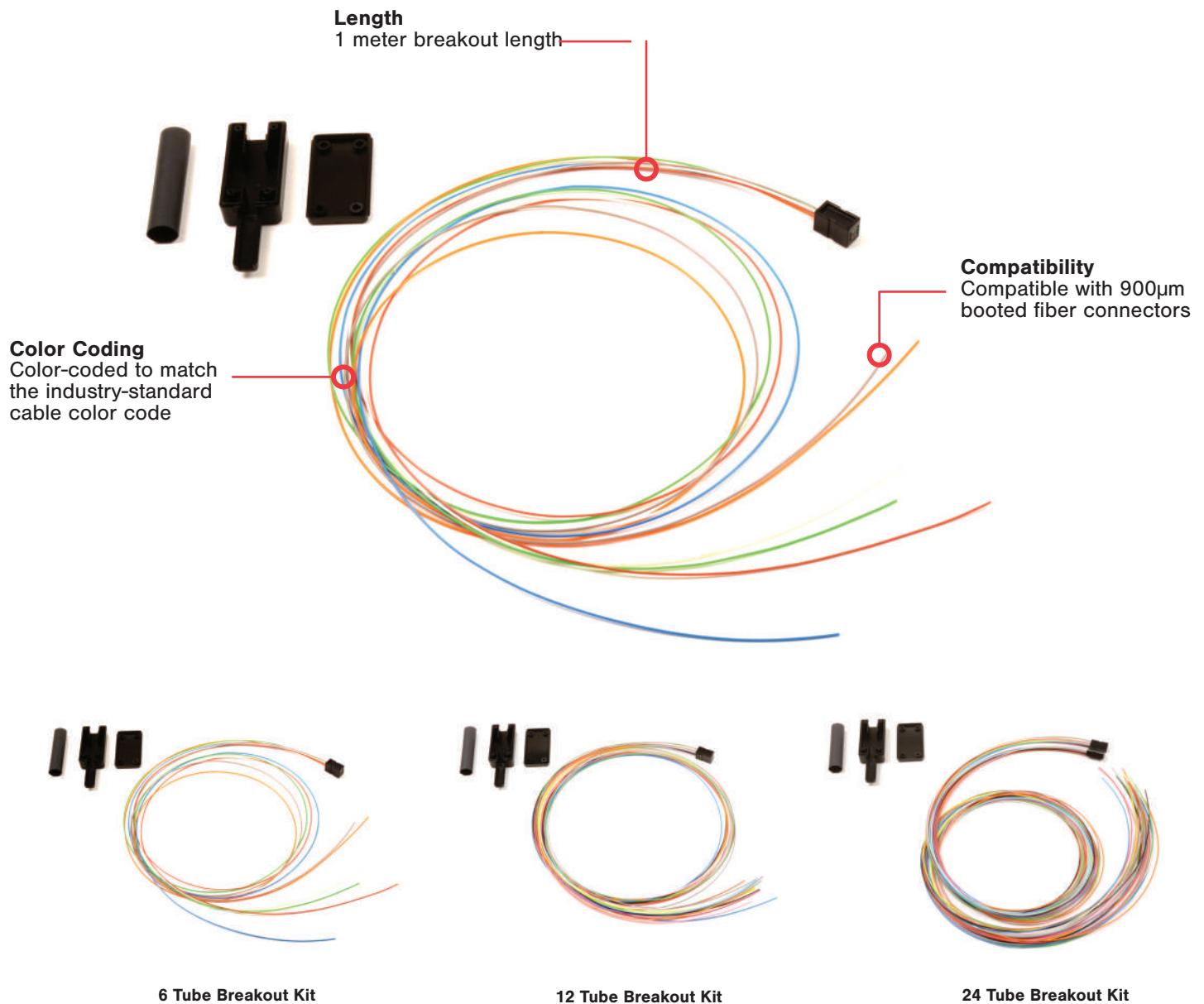
Part Number	Description
FC1-LB-SCU-9BL	SC simplex connector (UPC), blue, singlemode (OS1/OS2), 900µm buffered fiber, white boot
FC1-LB-SCA-9GR	SC simplex connector (APC), green, singlemode (OS1/OS2), 900µm buffered fiber, white boot

For use with 900µm tight buffer terminations only.



900µm Breakout Kits

Siemon's 900µm breakout kits are designed to easily route 250µm fibers into 900µm color coded buffer tubes to be directly terminated to industry standard fiber optic connectors with 900µm boots. The breakout kits include all necessary materials to breakout the 250µm fibers into 6,12 or 24 groups for routing into splice trays and splice enclosures.



Ordering Information:

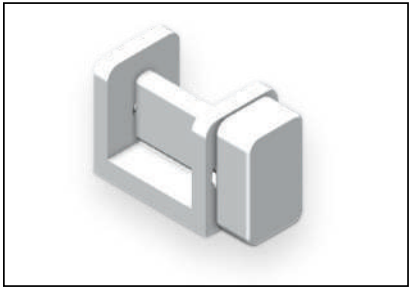
Part #	Description
FBK-E06	6 Tube Breakout Kit, 1 meter
FBK-E12	12 Tube Breakout Kit, 1 meter
FBK-E24	24 Tube Breakout Kit, 1 meter

LightBow Fan Out Kits Clamp

LightBow Fan Out Kits Clamp is to be used in the 250µm termination process with 900µm breakout kits. This clamp will prevent the 250µm fiber from pistoning inside the 900µm buffered breakout kit during the termination process.

Ordering Information

Part Number	Description
FT-CLAMP	Crimp Tool, LBow, Buffer



Because we continuously improve our products, Siemon reserves the right to change specifications and availability without prior notice.

North America P: (1) 860 945 4200	Mexico P: (521) 556 387 7708/09/10	Latin America P: (571) 657 1950/51/52	Europe P: (44) 0 1932 571771	China P: (86) 215385 0303	India, Middle East & Africa P: (971) 4 3689743
Asia Pacific P: (61) 2 8977 7500	Siemon OEM Technologies P: (1) 860 945 4213 www.siemon.com/OEM				

