

# Cable Tray Rack

Regional Availability – Global



Designed to mount directly to overhead ladder rack or cable tray, Siemon's Cable Tray Rack delivers 4U of easily installed and accessible 19" rack mount space above cabinets and racks without consuming additional floor space, making it ideal for use as a Zone Distribution Area (ZDA) or Equipment Distribution Area (EDA) in data centers. Used with copper patch panels or fiber enclosures, the cable tray rack can increase cabling density, improve cable routing, simplify moves, adds and changes and provide pre-cabled connectivity for rapid deployment of new cabinets, racks and equipment.



## Features

- CEA-310-E compliant mounting holes
- Robust 12-gauge steel construction
- Smooth black powder coat finish
- Mounting hardware and cable management included
- 60 lb load rating
- UL-Listed

### 1. Improved Thermal Efficiency

Helps improve airflow by managing patching fields and cabling above cabinets and racks, minimizing obstruction of equipment cooling features.

### 2. Rapid Data Center Deployment

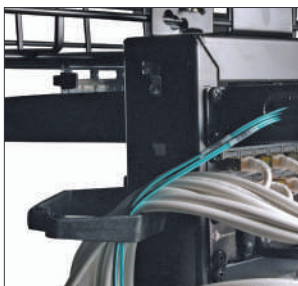
Can be used in conjunction with Siemon's pre-terminated copper and fiber solutions to reduce installation time.

### 3. Open Compatibility

Rack mount solution attaches to all common overhead cable tray and ladder rack systems, including Siemon's RouteIT system.

### 4. Optional Cable Manager

Optional vertical cable managers easily mount to one or both sides and offer more discreet, higher capacity cable management.



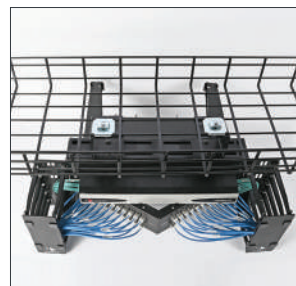
#### Flexible Cable Routing

Included with every cable tray rack are high capacity 1/4 turn twist-lock cable managers that lock into place quickly without use of screws or mounting tools and can be easily located to provide customized cable management.



#### Flexible Mounting

Unique design can be mounted below, flush or above cable tray in both parallel and perpendicular configurations.



#### Floor Space Maximization

Provides up to 6U of standard 19" rack mount space above cabinets and racks to maximize cabling density/minimize data center floor space needs.



#### Versatile Cable Management

For added cable organization, the optional vertical cable managers can be purchased separately to expand the capacity of the cable tray rack.

# Ordering Information

Part Numbers	Description
CTR-02-01*	Cable Tray Rack, 2U, Black, #12-24. Includes mounting hardware, (2) 1/4 turn cable managers, ground lug
CTR-04-01*	Cable Tray Rack, 4U, Black, #12-24. Includes mounting hardware, (4) 1/4 turn cable managers, ground lug
CTR-06-01*	Cable Tray Rack, 6U, Black, #12-24. Includes mounting hardware, (6) 1/4 turn cable managers, ground lug
CTR-02-MGR-01	Vertical Cable Manager, Single Side, 2U. Includes cover and mounting hardware
CTR-04-MGR-01	Vertical Cable Manager, Single Side, 4U. Includes cover and mounting hardware
CTR-06-MGR-01	Vertical Cable Manager, Single Side, 6U. Includes cover and mounting hardware
CTR-LRK	Ladder Rack Mounting Kit for Cable Tray Rack

\*Add "C" to end of part number for cage nut version (includes 4 M6 cage nuts per U space).



CTR-04-01



CTR-06-MGR-01



CTR-LRK



Parallel to Tray  
(Flush)



Perpendicular to Tray  
(Below)



Perpendicular to Ladder Rack  
(Below)

Because we continuously improve our products, Siemon reserves the right to change specifications and availability without prior notice.

**North America**  
P: (1) 860 945 4200

**Mexico**  
P: (521) 556 387 7708/09/10

**Latin America**  
P: (571) 657 1950/51/52

**Europe**  
P: (44) 0 1932 571771

**China**  
P: (86) 215385 0303

**India, Middle East & Africa**  
P: (971) 4 3689743

**Asia Pacific**  
P: (61) 2 8977 7500

**Siemon OEM Technologies**  
P: (1) 860 945 4213  
[www.siemon.com/OEM](http://www.siemon.com/OEM)

[www.siemon.com](http://www.siemon.com)

