

# Category 6A UTP BladePatch® Modular Cords

Siemon's Category 6A UTP BladePatch patch cord offers a unique Category 6A solution for high-density patching environments. It features an innovative push-pull boot design to control the latch, enabling easy access and removal of the cord in tight-fitting areas. The BladePatch cord is ideal for patching blade servers, patch panels, or any equipment with high density RJ-45 outlets.



## Snagless

Push-pull latch design eliminates external thumb latch used in standard modular plug designs which can snag and break

## High Performance

6A UTP cords feature a barrier layer for excellent alien crosstalk performance and heat dissipation

## High-Density

Ideal for high-density data center applications and today's high-density blade servers

## Low Profile Boot Design

Optimizes side-stackability of patch cords and allows use in even the most dense equipment

## Easy Access and Removal

RJ-45 patch cord with patent-pending push-pull latch design enables easy access and removal in high density patching environments

## STANDARDS COMPLIANCE

- ANSI/TIA-568.2-E
- TIA-968-B
- TIA-1096-A
- ISO/IEC 11801-1
- IEC 60603-7
- CM: cUL US Listed
- LSOH: IEC 60332-3-22, IEC 60332-1, 60754, 61034

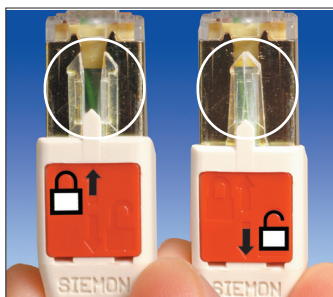
## APPLICATIONS SUPPORT

- 10GBASE-T
- 1000BASE-T
- 100BASE-T
- 10BASE-T
- HDBASE-T
- IEEE 802.3af (Type 1 PoE)
- IEEE 802.3at (Type 2 PoE)
- IEEE 802.3bt (Type 3 PoE)
- IEEE 802.3bt (Type 4 PoE)
- Power Over HDBaseT (PoH)



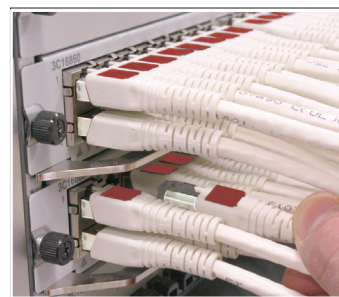
## Universal Compatibility

Fits within any standard RJ-45 opening.



## Revolutionary Latch

Simply push the boot forward to latch into the outlet and pull back to release.



## High Density

The push-pull design enables easy access and removal via the boot in tight-fitting areas.

# Performance Specifications\*

## ELECTRICAL

Contact Resistance	20mΩ
Input to Output Resistance	200mΩ
Min. Dielectric Withstand Voltage (contact to contact)	1000 V DC or AC peak
Insulation Resistance	500 mΩ
Compatibility	Category 6A, 6 and 5e
Current Rating @ 25°C	1.5 A
Power over Ethernet	PoE (Type 1, 2, 3, 4) PoH
Surface Transfer Impedance	< 10 mΩ/m @ 10 MHz

## MECHANICAL - GENERAL

Operating Temperature	-10 to 60°C, (14 to 140°F)
Flammability Rating	UL 94 V-0
Green Features	RoHS, lead-free, halogen-free, PVC free
Plug Housing Materials	Polycarbonate
Contact Materials	50 micro inches gold plating or equivalent
Plastic Materials	Flame retardant thermoplastic
Screen	360 degree enclosure
Marking	P/N, length, performance level, QC

## MECHANICAL - PLUG

Number of Plug Insertion Cycles	2500
Min. Plug Retention Force	50N (11.2 lbf)
Plug Compatibility	Compatible with RJ45
Cable to Plug Tensile Strength (min.)	20 lbs.

## MECHANICAL - CABLE (STRANDED)

Wire Size Range (Nominal)	26 AWG 7x34 Stranded tinned copper
Cable Construction	UTP with barrier layer
Cable OD (Nominal)	6.3mm (0.25 in.)
Wiring	T568A/B
Jacket type	CM/LS0H
Bend Radius	25mm (1.0 in.)

## Ordering Information

### Category 6A UTP BladePatch

Category 6A BladePatch double ended, 4-pair UTP stranded modular cord with push-pull latching design, color matching cord/boot, T568A/B, CM/LS0H

BP6A-(XX)M-(XX)B

BP6A-(XX)-(XX)

#### Cord Length

01 = 1m (3.3 ft.)  
1.5 = 1.5m (4.9 ft.)  
02 = 2m (6.6 ft.)  
03 = 3m (9.8 ft.)  
04 = 4m (13.1 ft.)  
05 = 5m (16.4 ft.)

#### Cord Color

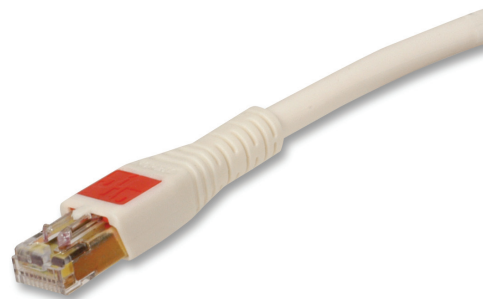
01 = Black  
02 = White  
03 = Red  
04 = Gray  
05 = Yellow  
06 = Blue  
07 = Green  
08 = Violet  
09 = Orange

#### Cord Length

03 = 3ft (0.9m)  
05 = 5ft (1.5m)  
07 = 7ft (2.1m)  
10 = 10ft (3.0m)  
15 = 15ft (4.5m)  
20 = 20ft (6.0m)

#### Cord Color

01 = Black  
02 = White  
03 = Red  
04 = Gray  
05 = Yellow  
06 = Blue  
07 = Green  
08 = Violet  
09 = Orange



Add "B" to end of part number for bulk project pack of 100 cords.

The use of Category 6A UTP BladePatch modular cords will provide Category 6A channel performance if used in a Z-MAX 6A system.

Z-MAX 6A warranty margins do not apply.



SCAN TO DOWNLOAD  
SPEC SHEET

Because we continuously improve our products, Siemon reserves the right to change specifications and availability without prior notice.

**North America**  
P: (1) 860 945 4200

**Asia Pacific**  
P: (61) 2 8977 7500

**Mexico**  
P: (521) 556 387 7708/09/10

**Siemon OEM Technologies**  
P: (1) 860 945 4213  
www.siemon.com/OEM

**Latin America**  
P: (571) 657 1950/51/52

**China**  
P: (86) 215385 0303

**Europe**  
P: (44) 0 1932 571771

**India, Middle East & Africa**  
P: (971) 4 3689743