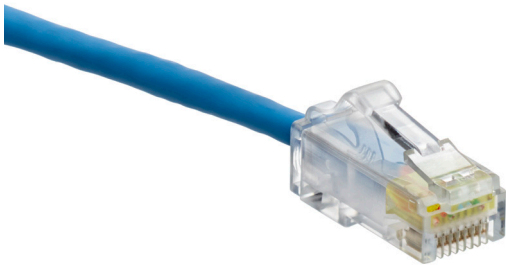


## Cat 6 Small Diameter High-Flex Patch Cords

### APPLICATION

Cat 6 Small Diameter High-Flex Patch Cords, with a compact plug and boot, are designed to be used in 1-Gigabit applications and all frequencies from 1 to 250 MHz. Patch cords offer flexible, high-density patching. Cables support high-speed data applications. They reduce patch cord density in a 24-port patch panel by 38 percent when compared to typical Cat 6 patch cords.



### SPECIFICATION

Patch cords shall meet or exceed electrical transmission performance requirements of links and channels as described in ANSI/TIA-568.2 (Cat 6), ISO/IEC 11801-1 (Class E), and EN 50173-1 (Class E). The patch cords shall be 28 AWG, unshielded, twisted-pair, stranded conductor construction with a standard 8-position modular plug on both ends. Plug contacts shall be plated with minimum of 50 micro inches of gold and rated to 2,500 mating cycles. Patch cords shall have an outer diameter of 0.15 inches (3.8 mm) and shall be available in white, yellow, gray, black, red, green, and blue.

### WARRANTY INFORMATION

For Leviton product warranties, go to [Leviton.com/ns/warranty](http://Leviton.com/ns/warranty)

### DESIGN CONSIDERATIONS

- Provide connectivity for 1-Gigabit applications
- Available in a variety of colors for color-coding or organization
- Channel Length:
  - Supports 96-meter channels that include 90-meter permanent links
  - Supports 93-meter channels with 10 meters of patch cords included in the channel
- Under PoE load at 100 watts, must observe bundle size/bundle separation per TIA TSB-184-A
- GREENPACK™ patch cords packed in either 24 or 12 cords per box

### FEATURES & BENEFITS

- Available in white, yellow, gray, black, red, green, and blue
- Available in stock lengths of 6 inches (0.15 m) and 1-20 feet (0.30 - 6.0 m) in 1-foot (0.3 m) increments
- Power over Ethernet (PoE and PoE+) compatible
- Compact plug and boot promotes shorter installed bend radius, ideal for limited depth applications
- Accommodate use in high-density switches, routers, and other electronics
- Bend radius is a narrow 0.60 inches (15.2 mm), versus 1.0 inch (25.4 mm) for typical Cat 6 patch cords
- Snagless plug design prevents tab breakage
- Integrated strain-relief
- Plug contacts rated to 2,500 mating cycles
- Dual-rated cable jacket (CM/LSZH)
- Accepts clip-on colored boot markers for network identifications
- Compatible with Leviton Secure RJ system
- GREENPACK™ Bulk Pack Sustainably Smart Packaging eliminates single use plastics in packaging and reduces jobsite time removing cords from individual bags
- GREENPACK Sustainably Smart Packaging is 100% recyclable brown cardboard with reduced ink coverage
- GREENPACK reduces jobsite waste by eliminating all sub-level packaging
- Living Building Challenge Red List Free product

6H460-XX\*, 6H4P0-XX\*

## PRODUCT SPECIFICATIONS

**6H460-XX\*, 6H4P0-XX\***

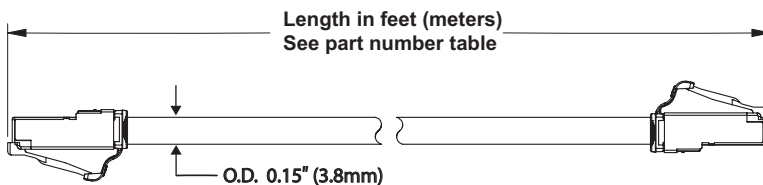
### MECHANICAL SPECIFICATIONS

Dimensions:	6"-20' (0.15 - 6.0 m) in 1' (0.3 m) increments
Materials:	28 AWG, stranded UTP, standard modular non-keyed, 8-position, 8-conductor plug, 94V-0 rated
Cable Outer Diameter:	0.15 inches (3.8 mm)
Bend Radius:	0.60 inches (15.2 mm)
Temp. (Storage):	-20 °C to +60 °C
Temp. (Installation):	0 °C to +50 °C
Temp. (Operating):	-20 °C to +50 °C
UL voltage rating:	300V

### STANDARDS & REGULATIONS

- ANSI/TIA-568.2
- ISO/IEC 11801-1
- EN 50173-1
- ANSI/TIA-1096-A
- RoHS compliant
- UL 444 - CM
- IEC 60603-7: Connectors for electronic equipment - Part 7: Detail specification for 8-way, unshielded, free and fixed connectors
- IEC 60332-1 [1,2] (2004-07), 60754, 61034
- IEEE 802.3 PoE Type 1, 2, 3, 4 (100 watts max)
- Cisco UPOE, UPOE+ (90 watts max)
- Power over HDBaseT™ PoH (95 watts max)
- Exceeds IEEE 802.3 standard up to 0.5 amps per conductor (100 watts) continuously
- Fully supports the safe delivery of power over LAN cabling described by IEEE 802.3 (Type 4) and complies with the unmating under electrical load requirements prescribed by IEC 60512-99-002

**6H460-XX\*, 6H4P0-XX\***



**GREENPACK™ Bulk Pack Packaging**

## PRODUCT SPECIFICATIONS

### 6H460-XX\*, 6H4P0-XX\*

#### EUROPE, MIDDLE EAST AND APAC

Description	White	Yellow	Red	Blue	Green	Gray
Patch Cord, 0.5 feet (0.15 m), pack of 24	6H4PI-06W	6H4PI-06Y	6H4PI-06R	6H4PI-06L	6H4PI-06G	6H4PI-06S
Patch Cord, 1 foot (0.3 m), pack of 24	6H4P0-01W	6H4P0-01Y	6H4P0-01R	6H4P0-01L	6H4P0-01G	6H4P0-01S
Patch Cord, 2 feet (0.6 m), pack of 24	6H4P0-02W	6H4P0-02Y	6H4P0-02R	6H4P0-02L	6H4P0-02G	6H4P0-02S
Patch Cord, 3 feet (0.9 m), pack of 24	6H4P0-03W	6H4P0-03Y	6H4P0-03R	6H4P0-03L	6H4P0-03G	6H4P0-03S
Patch Cord, 4 feet (1.2 m), pack of 24	6H4P0-04W	6H4P0-04Y	6H4P0-04R	6H4P0-04L	6H4P0-04G	6H4P0-04S
Patch Cord, 5 feet (1.5 m), pack of 24	6H4P0-05W	6H4P0-05Y	6H4P0-05R	6H4P0-05L	6H4P0-05G	6H4P0-05S
Patch Cord, 7 feet (2.1m), pack of 24	6H4P0-07W	6H4P0-07Y	6H4P0-07R	6H4P0-07L	6H4P0-07G	6H4P0-07S
Patch Cord, 10 feet (3.0 m), pack of 24	6H4P0-10W	6H4P0-10Y	6H4P0-10R	6H4P0-10L	6H4P0-10G	6H4P0-10S
Patch Cord, 12 feet (3.7 m), pack of 12	6H4P0-12W	6H4P0-12Y	6H4P0-12R	6H4P0-12L	6H4P0-12G	6H4P0-12S
Patch Cord, 14 feet (4.3 m), pack of 12	6H4P0-14W	6H4P0-14Y	6H4P0-14R	6H4P0-14L	6H4P0-14G	6H4P0-14S
Patch Cord, 15 feet (4.6 m), pack of 12	6H4P0-15W	6H4P0-15Y	6H4P0-15R	6H4P0-15L	6H4P0-15G	6H4P0-15S
Patch Cord, 17 feet (5.2 m), pack of 12	6H4P0-17W	6H4P0-17Y	6H4P0-17R	6H4P0-17L	6H4P0-17G	6H4P0-17S
Patch Cord, 20 feet (6.1 m), pack of 12	6H4P0-20W	6H4P0-20Y	6H4P0-20R	6H4P0-20L	6H4P0-20G	6H4P0-20S

#### NORTH AMERICA AND LATIN AMERICA

Description	White	Yellow	Red	Blue	Green	Gray	Black	GREENPACK™ Blue 12- or 24-Count Pack
Patch Cord, 0.5 feet (0.15 m)	6H460-6IW	6H460-6IY	—	6H460-6IL	—	6H460-6IS	—	—
Patch Cord, 1 foot (0.3 m)	6H460-01W	6H460-01Y	6H460-01R	6H460-01L	6H460-01G	6H460-01S	6H460-01E	6H4P0-01L (Pack of 24)
Patch Cord, 2 feet (0.6 m)	6H460-02W	6H460-02Y	6H460-02R	6H460-02L	6H460-02G	6H460-02S	6H460-02E	—
Patch Cord, 3 feet (0.9 m)	6H460-03W	6H460-03Y	6H460-03R	6H460-03L	6H460-03G	6H460-03S	6H460-03E	6H4P0-03L (Pack of 24)
Patch Cord, 4 feet (1.2 m)	6H460-04W	6H460-04Y	6H460-04R	6H460-04L	6H460-04G	6H460-04S	6H460-04E	—
Patch Cord, 5 feet (1.5 m)	6H460-05W	6H460-05Y	6H460-05R	6H460-05L	6H460-05G	6H460-05S	6H460-05E	6H4P0-05L (Pack of 24)
Patch Cord, 6 feet (1.8 m)	6H460-06W	6H460-06Y	6H460-06R	6H460-06L	6H460-06G	6H460-06S	6H460-06E	—
Patch Cord, 7 feet (2.1 m)	6H460-07W	6H460-07Y	6H460-07R	6H460-07L	6H460-07G	6H460-07S	6H460-07E	6H4P0-07L (Pack of 24)
Patch Cord, 8 feet (2.4 m)	6H460-08W	6H460-08Y	6H460-08R	6H460-08L	6H460-08G	6H460-08S	6H460-08E	—
Patch Cord, 9 feet (2.7 m)	6H460-09W	6H460-09Y	6H460-09R	6H460-09L	6H460-09G	6H460-09S	6H460-09E	—
Patch Cord, 10 feet (3.0 m)	6H460-10W	6H460-10Y	6H460-10R	6H460-10L	6H460-10G	6H460-10S	6H460-10E	6H4P0-10L (Pack of 24)
Patch Cord, 11 feet (3.4 m)	6H460-11W	6H460-11Y	6H460-11R	6H460-11L	6H460-11G	6H460-11S	6H460-11E	—
Patch Cord, 12 feet (3.7 m)	6H460-12W	6H460-12Y	6H460-12R	6H460-12L	6H460-12G	6H460-12S	6H460-12E	—
Patch Cord, 13 feet (4.0 m)	6H460-13W	6H460-13Y	6H460-13R	6H460-13L	6H460-13G	6H460-13S	6H460-13E	—
Patch Cord, 14 feet (4.3 m)	6H460-14W	6H460-14Y	6H460-14R	6H460-14L	6H460-14G	6H460-14S	6H460-14E	—
Patch Cord, 15 feet (4.6 m)	6H460-15W	6H460-15Y	6H460-15R	6H460-15L	6H460-15G	6H460-15S	6H460-15E	6H4P0-15L (Pack of 12)
Patch Cord, 16 feet (4.9 m)	6H460-16W	6H460-16Y	6H460-16R	6H460-16L	6H460-16G	6H460-16S	6H460-16E	—
Patch Cord, 17 feet (5.2 m)	6H460-17W	6H460-17Y	6H460-17R	6H460-17L	6H460-17G	6H460-17S	6H460-17E	—
Patch Cord, 18 feet (5.5 m)	6H460-18W	6H460-18Y	6H460-18R	6H460-18L	6H460-18G	6H460-18S	6H460-18E	—
Patch Cord, 19 feet (5.8 m)	6H460-19W	6H460-19Y	6H460-19R	6H460-19L	6H460-19G	6H460-19S	6H460-19E	—
Patch Cord, 20 feet (6.1 m)	6H460-20W	6H460-20Y	6H460-20R	6H460-20L	6H460-20G	6H460-20S	6H460-20E	6H4P0-20L (Pack of 12)

NOTE: Other lengths and colors are available by special order, please contact Customer Service for more information.

Lengths from 3-20 feet are component rated; all other lengths are channel rated. Additional lengths and colors, such as Orange (O) and Violet (V), available.

For further support information, visit [Leviton.com/ns/support](http://Leviton.com/ns/support)

Page 3 of 3

**USA**  
Network Solutions Headquarters  
+1 (800) 722 2082  
[infoUSA@leviton.com](mailto:infoUSA@leviton.com)

BERK-TEK™ Cable  
+1 (800) 237 5835 | [infoUSA@leviton.com](mailto:infoUSA@leviton.com)

**Asia Pacific**  
+852 3620 2602  
[infoAPAC@leviton.com](mailto:infoAPAC@leviton.com)

**Canada**  
+1 (800) 461 2002  
[infoCanada@leviton.com](mailto:infoCanada@leviton.com)

**Europe**  
+44 (0) 1592 772124  
[infoEurope@leviton.com](mailto:infoEurope@leviton.com)

**Latin America**  
MX: +52 (55) 2128 6286  
LATAM: +52 (55) 2333 5963  
[infoLATAM@leviton.com](mailto:infoLATAM@leviton.com)

**Middle East & Africa**  
+971 (4) 247 9800  
[infoMEA@leviton.com](mailto:infoMEA@leviton.com)

NETWORK SOLUTIONS PRODUCTS ARE AVAILABLE WORLDWIDE IN OVER 100 COUNTRIES. VISIT US ONLINE AT [LEVITON.COM/NS](http://LEVITON.COM/NS) TO LEARN MORE.