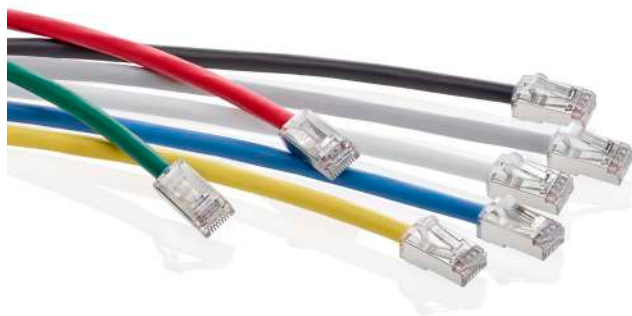


Cat 6A Patch Cords

APPLICATION

Leviton Cat 6A Patch Cords, with a compact plug and boot, exceed all channel performance requirements in ANSI/TIA-568.2-D from 1 MHz to 500 MHz to support the IEEE 802.3an standard for 10 Gigabit Ethernet over UTP cable. The patch cords provide superior alien crosstalk suppression and protect critical data from EMI (electromagnetic interference) and RFI (radio frequency interference). They are ideal for use in a UTP Cat 6A system, or as part of a Cat 6A shielded system for use in health care, manufacturing, casinos, and other environments where alien crosstalk may be a concern.



SPECIFICATION

Patch cords shall meet or exceed electrical transmission performance requirements for all internal and alien crosstalk parameters from 1 to 500 MHz as described in ANSI/TIA-568.2-D (Cat 6A) and ISO/IEC 11801-1 (Class E_A) and EN 50173-1 (Class E_A). The patch cord shall be a 26-gauge FTP construction with stranded conductors to provide greater flex life. The patch cord will incorporate a plug and boot combination to provide strain relief and ease of use in higher-density applications. The patch cords shall be available in standard lengths of 3, 5, 7, 10, 15, and 20 feet. The patch cord shall be available in seven standard colors. Patch cord plug shall have industry-standard, ANSI/TIA-1096-A compliant 50 micro inches of gold plating.

COUNTRY OF ORIGIN

USA

FEATURES

- Tested and verified for Cat 6A component performance
- Cable construction provides excellent alien crosstalk suppression and EMI/RFI protection
- Compact plug and boot promotes shorter installed bend radius, ideal for limited depth applications
- Snagless design prevents tab breakage
- Integrated strain relief
- Easily manageable, with an outside diameter of .240 inches
- 26 AWG stranded conductors for maximum flexibility
- Same cord for UTP or shielded installations
- Manufactured by Leviton using Berk-Tek cable
- Accepts clip-on colored boot markers for network identifications

STANDARDS & REGULATIONS

- ANSI/TIA-568.2-D Cat 6A
- ISO/IEC 11801-1 Class E_A
- EN 50173-1 Class E_A
- cULus listed
- ANSI/TIA-1096-A
- UL 444 CMR rated
- IEEE 802.3bt PoE Type 1, 2, 3, 4 (90 watts max)
- Cisco UPOE, UPOE+ (90 watts max)
- Power over HDBaseT™ PoH (95 watts max)
- Maximum cable bundle for 90W and above is 100 cords

MECHANICAL SPECIFICATIONS

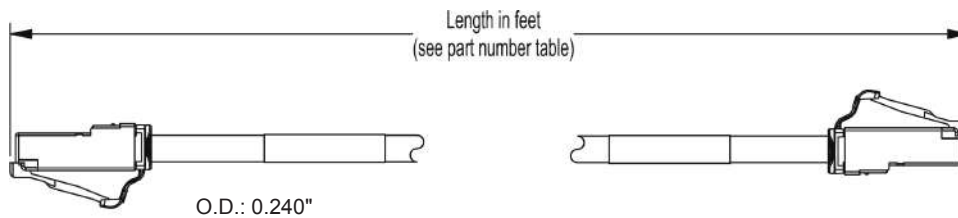
Available Lengths:	See page two
Outer Diameter (O.D.):	0.240"
Materials:	26 AWG, FTP stranded conductor
Colors:	White, yellow, red, blue, green, gray, and black
Temperature (Installation):	0 °C to +50 °C
Temperature (Storage):	-20 °C to +60 °C
Temperature (Operating):	-20 °C to +60 °C
UL voltage rating:	300V

WARRANTY INFORMATION

Note: Limited Product and Limited Extended Warranties are rendered VOID if the installed structured cabling system is used for PoE applications that exceed the product's specified power rating. For Leviton product warranties, go to leviton.com/ns/warranty

PRODUCT SPECIFICATIONS

6AS10-xxx



6AS10-xxx

ANSI/TIA-568.2-D CAT 6A PATCH CORD REQUIREMENTS

	TIA Minimum Requirements* (dB)		
	@ 100MHz	@ 250MHz	@ 500MHz
1-Meter Patch Cord NEXT	47.0	39.3	28.2
2-Meter Patch Cord NEXT	46.4	38.9	28.4
5-Meter Patch Cord NEXT	45.4	38.1	29.0
Return Loss - All Lengths	18.0	14.0	9.5

1 Meter = 3.280 Feet, 2 Meters = 6.561 Feet, 5 Meters = 16.404 Feet

*NOTES:

Patch Cords shall meet requirements of all parameters from 1-500 MHz.
Values in above table are only at specific frequencies and are for reference only.

CAT 6A PATCH CORDS – STOCKED ITEMS

Description	White	Yellow	Red	Blue	Green	Gray	Black
Cat 6A Patch Cord, 3 feet (0.9 m)	6AS10-03W	6AS10-03Y	6AS10-03R	6AS10-03L	6AS10-03G	6AS10-03S	6AS10-03E
Cat 6A Patch Cord, 5 feet (1.5 m)	6AS10-05W	6AS10-05Y	6AS10-05R	6AS10-05L	6AS10-05G	6AS10-05S	6AS10-05E
Cat 6A Patch Cord, 7 feet (2.1 m)	6AS10-07W	6AS10-07Y	6AS10-07R	6AS10-07L	6AS10-07G	6AS10-07S	6AS10-07E
Cat 6A Patch Cord, 10 feet (3.0 m)	6AS10-10W	6AS10-10Y	6AS10-10R	6AS10-10L	6AS10-10G	6AS10-10S	6AS10-10E
Cat 6A Patch Cord, 15 feet (4.5 m)	6AS10-15W	6AS10-15Y	6AS10-15R	6AS10-15L	6AS10-15G	6AS10-15S	6AS10-15E
Cat 6A Patch Cord, 20 feet (6.0 m)	6AS10-20W	6AS10-20Y	6AS10-20R	6AS10-20L	6AS10-20G	6AS10-20S	6AS10-20E

Note: Other lengths and colors (such as orange and violet) are available by special order, please contact customer service for more information.

For assistance customizing your patch cords, please visit www.leviton.com/configurator or call Tech Support at 800.824.3005.



For further support information, visit leviton.com/ns/support

Page 2 of 2

USA
Network Solutions Headquarters
+1 (800) 722 2082
infoUSA@leviton.com

Leviton Berk-Tek Cable: +1 (800) 237 5835
berktek.info@leviton.com

Asia Pacific
+852 3620 2602
infoAPAC@leviton.com

Canada
+1 (800) 461 2002
infoCanada@leviton.com

Europe
+44 (0) 1592 772124
infoEurope@leviton.com

Latin America
MX: +52 (55) 2128 6286
LATAM: +52 (55) 2333 5963
infoLATAM@leviton.com

Middle East & Africa
+971 (4) 247 9800
infoMEA@leviton.com

NETWORK SOLUTIONS PRODUCTS ARE AVAILABLE WORLDWIDE IN OVER 100 COUNTRIES. VISIT US ONLINE AT LEVITON.COM/NS TO LEARN MORE.