

25249-SBA

1-Gang Floor Box Receptacle Assembly

1-Gang Floor Box Receptacle Assembly, Includes Brass with Brushed Nickel Finish Floor Plate, Gasket, Screw Cap, O-ring, and Switch Box. NOTE: O-Ring Should be Assembled On Cap. Receptacle 15A-125V, 2-Pole, 3-Wire, Grounding, NEMA 5-15R. NICKEL



UPC Code : 078477307182

Country Of Origin : Mexico

NEMA :  5-15R

For low profile, in-floor receptacle installations, our Floor Box Receptacle Assemblies are the perfect fit. Available in both 15 & 20 Amp 1- and 2-gang configurations, these devices are suitable for wood frame construction with carpet, wood, tile, and vinyl finished flooring. Common applications include a variety of uses from home office workstations to high-end stages and entertainment venues.

Technical Information

AC Horsepower Ratings

At Rated Voltage : 1/2 HP

Electrical Specifications

Amperage : 15 A

Current Limiting : Full Rated Current

Dielectric Voltage :
Withstands 2000V per UL498

Grounding : Self Grounding

Pole : 2

Temperature Rise : Max 30C
after 50 cycles OL at 150
percent rated current

Voltage : 125 VAC

Wire : 3

Environmental Specifications

Flammability : Rated V-2 per
UL 94

Operating Temperature : -40°
C to 60°C

Material Specifications

Body Material : Nylon

Clamp Nuts : Zinc-Plated Steel

Color : Ivory/Brushed Nickel
Finish

Face Material : Nylon

Floorplate Material : Solid
Brass 0.060 In Thick

Ground Clips : Brass-Plated

Grounding Screw : Brass 8-32

Line Contacts : Brass Triple-
Wipe .031 Thick

Strap Material : Zinc-Plated
Steel

Terminal Screws : Brass 10-32

Mechanical Specifications

Product ID : Ratings are permanently marked on device

Terminal Accom. : 14-10 AWG

Terminal ID : Brass-Hot, Green-Ground, Silver-Neutral

Termination : Back & Side

Product Features

Amperage : 15 A

Color : Ivory/Brushed Nickel Finish

Grounding : Self Grounding

NEMA : 5-15R

Type : Wood Frame

Voltage : 125 VAC

Standards and Certifications

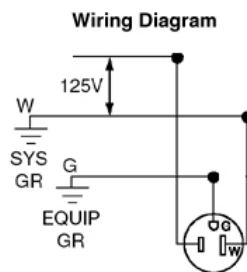
ANSI : C-73

Applicable Standards : UL 498, UL514A, CSA C22.2 No. 42, CSA C22.2 No 18.1-04

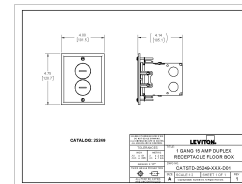
Certification/Listing : cCSAus, NOM-ANCE

NEMA : WD-1 & WD-6

Wiring Diagram



Dimensional Drawing



Leviton Manufacturing Co., Inc

201 North Service Road, Melville, NY 11747

Telephone: +1-800-323-8920 · FAX: +1-800-832-9538 · Tech Line (8:30AM-7:30PM E.S. T. Monday-Friday): +1-800-824-3005

Leviton Manufacturing of Canada, Ltd.

165 Hymus Boulevard, Pointe Claire, Quebec H9R 1E9 · Telephone: +1-800-461-2002 · FAX: +1-800-824-3005 ·

Leviton S. de R.L. de C.V.

Lago Tana 43, Mexico DF, Mexico CP 11290 · Tel.: (+52)55-5082-1040 · FAX: (+52) 5386- 1797 ·

Visit our Website at: www.leviton.com

© 2025 Leviton Manufacturing Co., Inc. All Rights Reserved. Subject to change without notice.

Leviton has a global presence.

If you would like to know where your local Leviton office is located please go to:
www.leviton.com/company/about-leviton/locations

© 2025 Leviton Manufacturing Co., Inc.